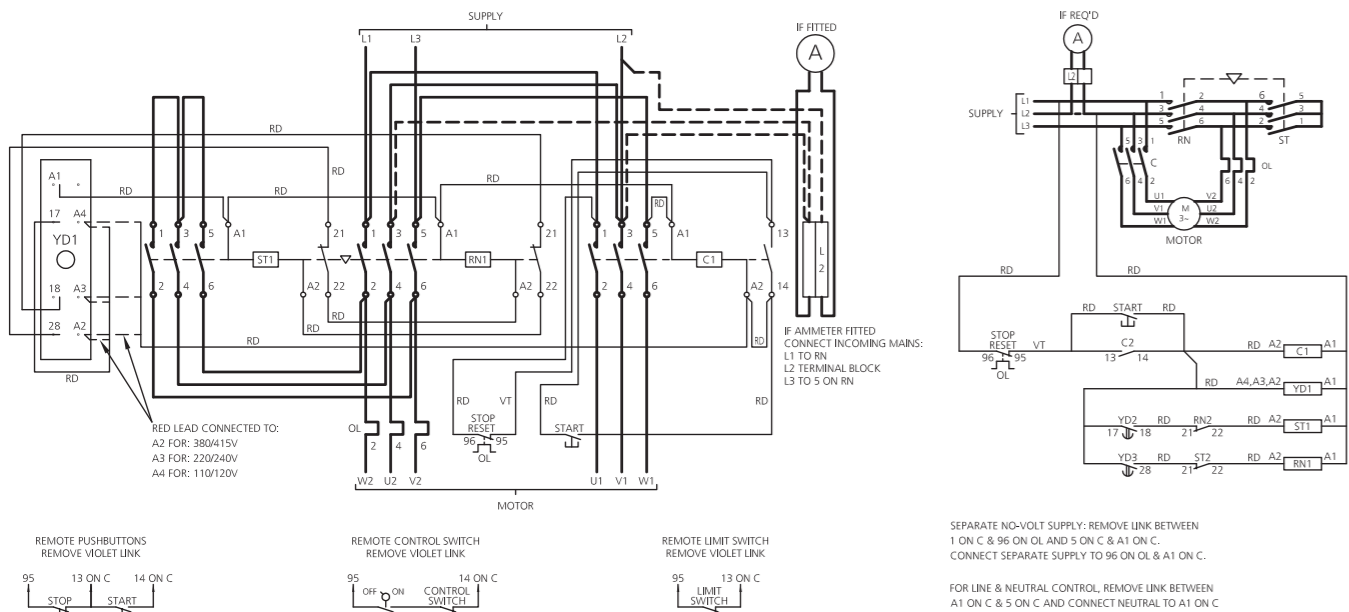
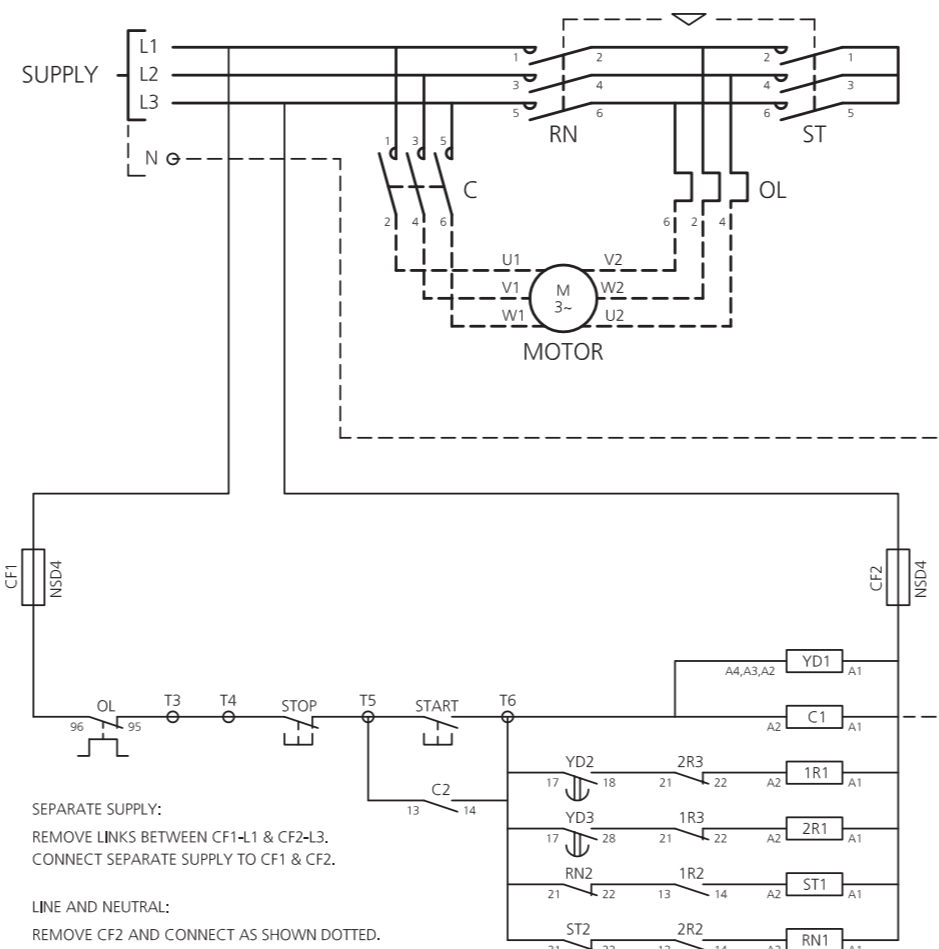


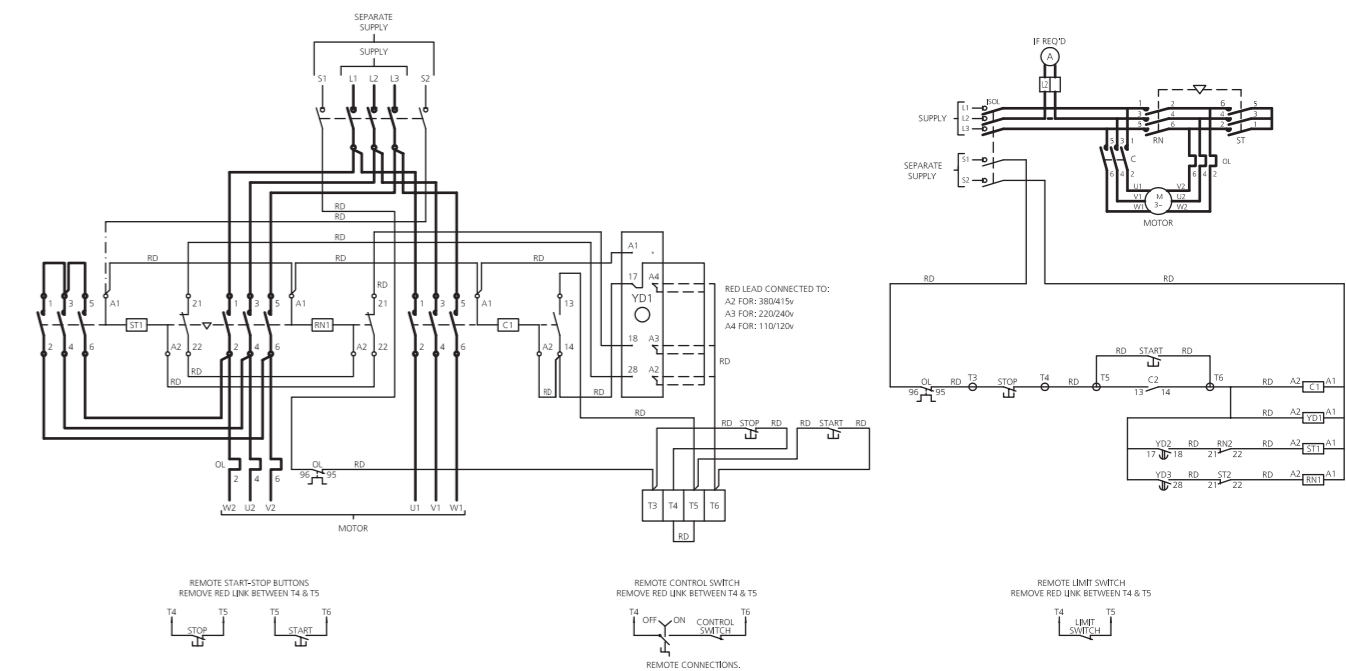
CIRCUIT DIAGRAM TYPE 3SD1/2 . . S



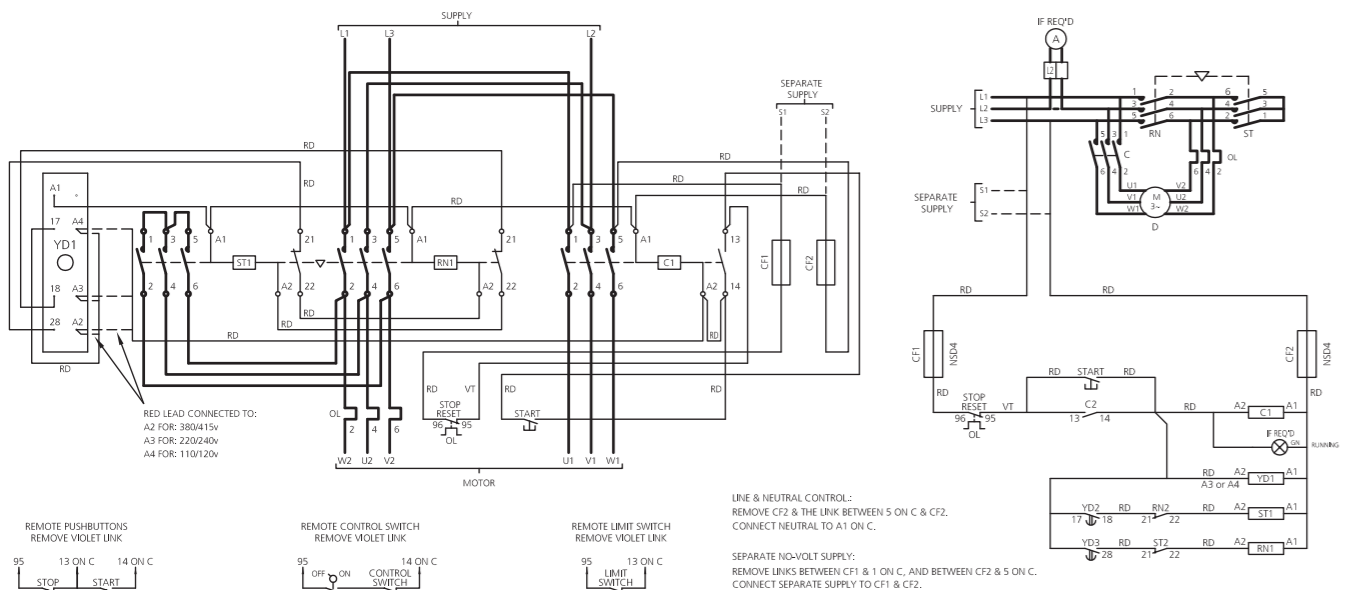
CIRCUIT DIAGRAM TYPE 3SD05/06 . . S



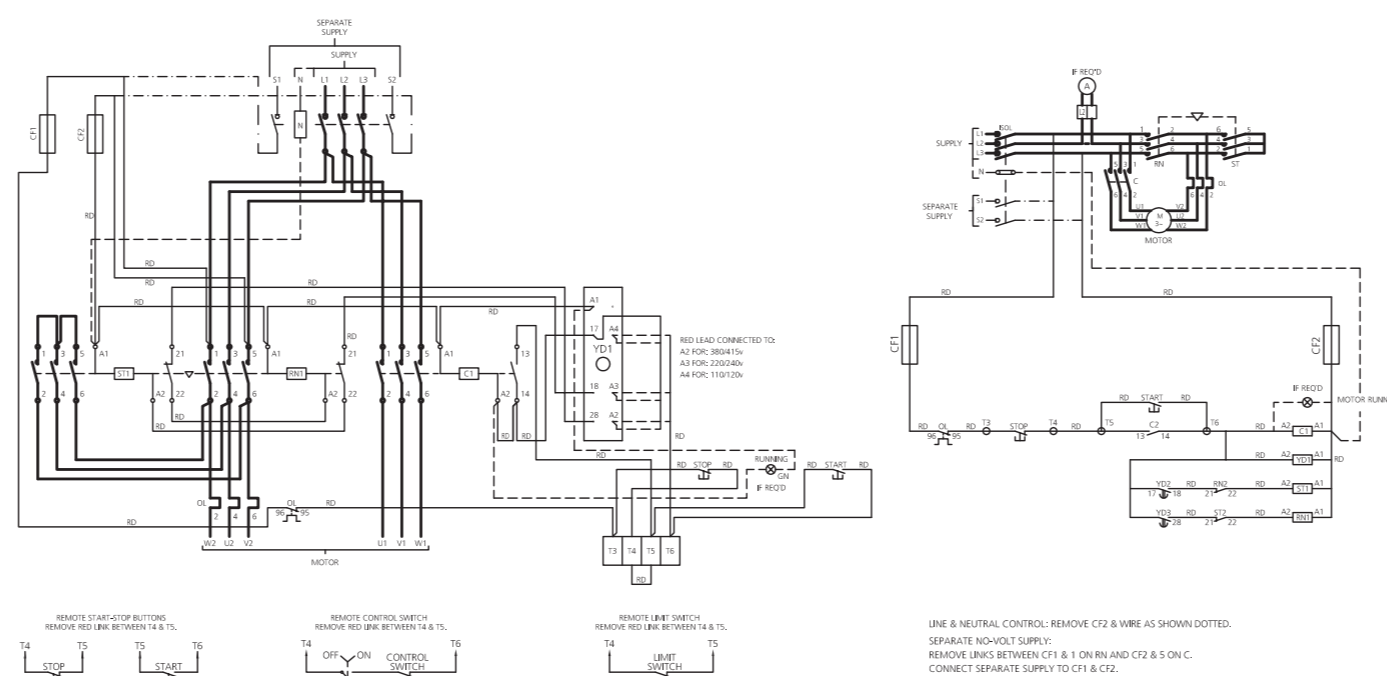
CIRCUIT DIAGRAM TYPE 3SD1/2 . . I WITH SEPARATE SUPPLY



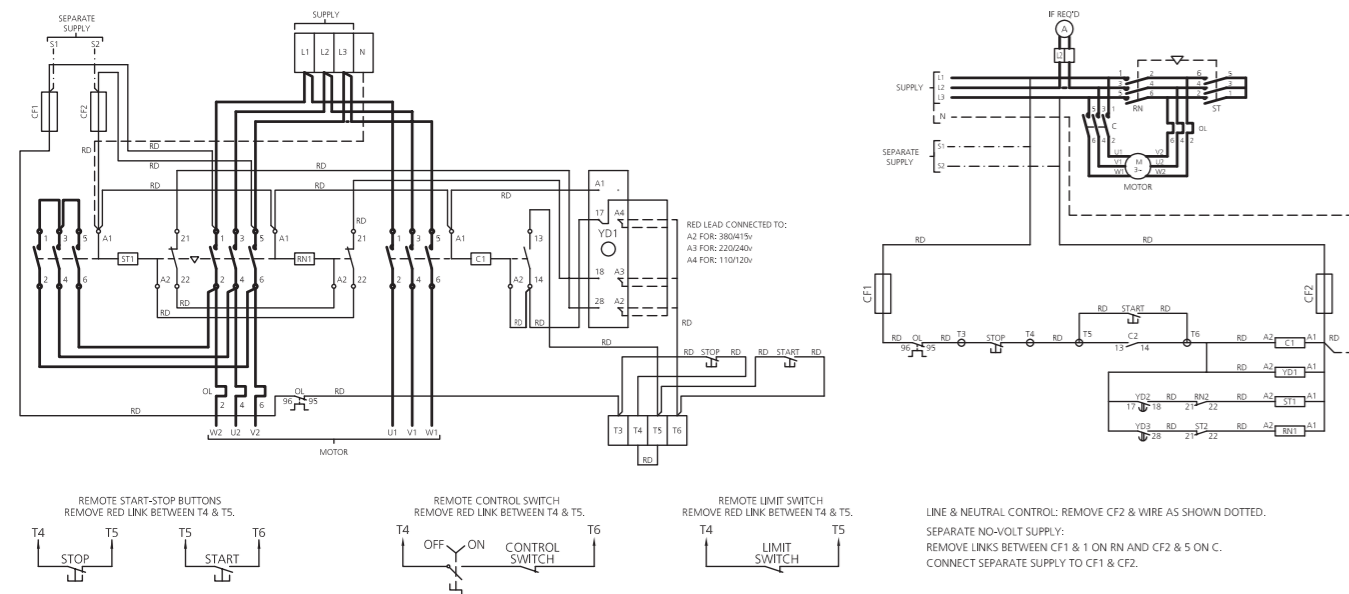
CIRCUIT DIAGRAM TYPE 3SD3 . . S



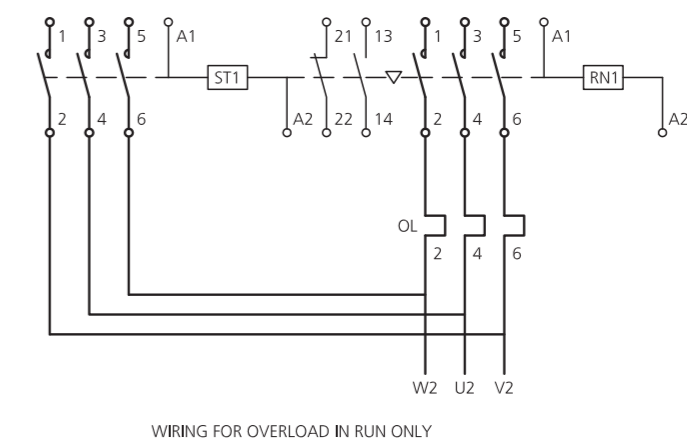
CIRCUIT DIAGRAM TYPE 3SD3/4 . . I



CIRCUIT DIAGRAM TYPE 3SD4/A5 . . S



WIRING FOR OVERLOAD IN RUN ONLY



- NOTE:
WHERE LONG ACCELERATION TIMES ARE INVOLVED, THIS MODIFICATION TO THE CIRCUIT CAN BE CARRIED OUT ON ALL STAR-DELTA STARTERS.
THE USE OF THIS CIRCUIT WILL HOWEVER LEAVE THE MOTOR UNPROTECTED DURING THE STARTING PERIOD AND THE FOLLOWING POINTS TO BE OBSERVED:
- 1) THE MOTOR SHOULD BE CAPABLE OF WITHSTANDING THE INTENDED ACCELERATION TIME.
 - 2) THE OPERATOR OF THE MACHINE SHOULD BE MADE AWARE OF THE DANGER OF CONSECUTIVE STARTS.
 - 3) THE SIZE OF THE START CONTACTOR MAY HAVE TO BE INCREASED.

